



# HIGH FLOW SERIES PRESSURE RELIEF VALVES



## Features:

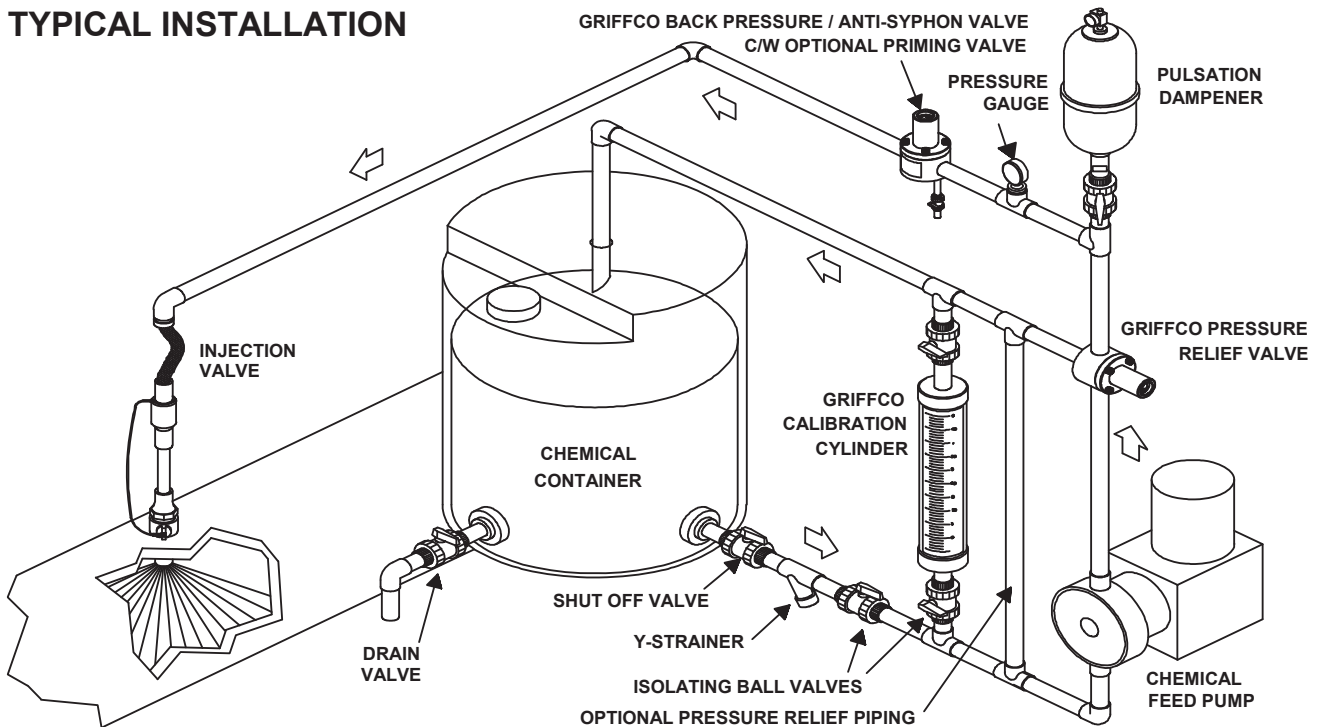
- High Reliability / Low Cost
- Large Orifice for High Viscosity Fluids
- Higher Flow / Lower Pressure Drop
- Adjustable 10 - 150 PSI
- Ventable to Suction Line
- 2 Port Design
- Vulcanised PTFE/EPDM Diaphragm
- Wide Range of Materials

## Operation:

Griffco diaphragm pressure relief valves operate when the pressure in a chemical line exceeds the pre-set pressure of the valve. The diaphragm is held against the valve seat by an internal spring. When the pre-set pressure is exceeded the diaphragm is forced up and the chemical flows out the relief port, back to the chemical tank or to the suction side of the pump. The valves are pre-set at 50 psi, however they are field adjustable from 10 - 150 psi via the adjustment screw. The relief valve should be set approximately 15 psi higher than the system pressure. Installation should be made as close to the pump as possible, without any valves or accessories between the relief valve and the pump. Consult your pump manufacturer for his recommendations.

Griffco high flow diaphragm pressure relief valves are designed to protect chemical transfer systems from over pressure damage caused by defective equipment or a blockage in the chemical line. Large orifice sizes facilitate high flows and high viscosity. Wetted materials include **PVC, CPVC, PP, PVDF, PTFE, 316SS, A20 and Hast. C.** Available sizes: 1/2", 3/4, and 1".

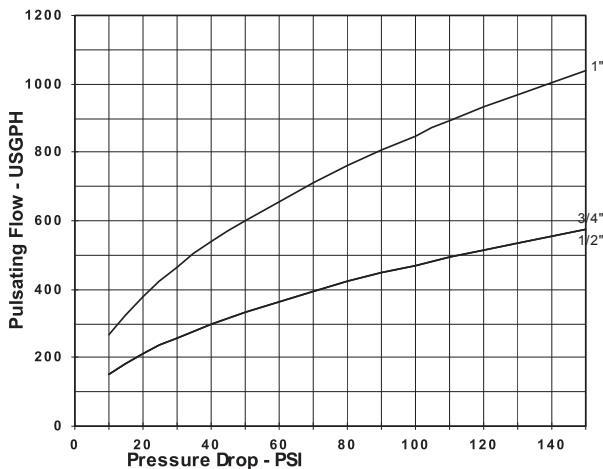
## TYPICAL INSTALLATION



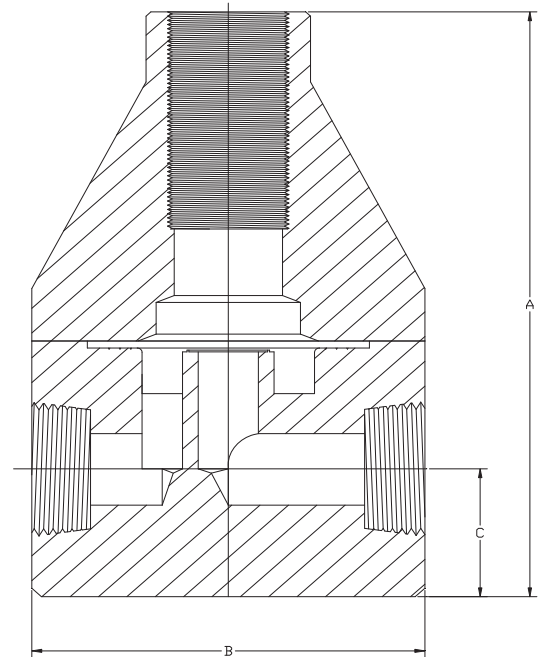
## Technical Data:

<b>Sizes:</b> Model PRHF			1/2", 3/4", 1"		
<b>Connections:</b>			NPT, Socket, Union, & Flange		
<b>Pressure Adjustment</b>			Standard: 10 - 150 psi, Optional: 0 - 50 psi, 10 - 250 psi		
<b>Flow Rates @ 150 psi</b>			Shipping Weight: lbs		
<b>Size</b>	<b>Pulsating</b>	<b>Continuous</b>	<b>Plastic</b>	<b>Metal / Plastic Top</b>	<b>Metal / Metal Top</b>
1/2"	600 USgph	30 USgpm	3.5	6.0	7.0
3/4"	600 USgph	30 USgpm	3.5	6.0	7.0
1"	1000 USgph	54 USgpm	7.0	14.0	23.0
<b>Max Temperature: (°F)</b>			PVC, PP: 140°; CPVC: 190°; PTFE, PVDF & Metal: 300°, (Peak 390°)		
<b>Materials of Construction:</b>					
<b>Diaphragm</b>			PTFE / EPDM, Optional: Viton & PTFE / Viton		
<b>Valve Top</b>			Standard: Noryl Optional: 316 SS		
<b>Valve Body</b>			PVC, CPVC, PP, PTFE, PVDF, 316 SS, A 20, Hast. C, Others on Request		

## Performance Curves



## Dimensions:



## Product Codes For Ordering:

PRHF

1      2      3      4

**1 = Size**    **2 = Material**    **3 = Spring Opt**    **4 = Options**

050 - 1/2"    P - PVC                      1 - 0 - 50 psi            V - Viton Diaphragm  
075 - 3/4"    CP - CPVC                  2 - 10 - 250 psi        S - Socket Connection  
100 - 1"      PP - Polypro                F - Flange Connection  
                  T - PTFE                      U - Union Connection  
                  K - PVDF                      B - BSP Connections  
                  H - Halar                      OSS - 316 SS Top  
                  S - 316 SS                     AR - Priming Valve  
                  A - Alloy 20  
                  C - Hastalloy C

### DIMENSIONS: PRHF-SERIES

All Materials

Size	A (in)	B (in)	C (in)
1/2"	5.560	3.500	1.125
3/4"	5.560	3.500	1.125
1"	7.250	4.900	1.250

### Standard Equipment & Controls

P.O. Box 330453  
Atlantic Beach, Florida 32233  
1-800-367-9230 Toll Free  
1-904-223-4381 Office  
1-904-223-5607 Fax  
sales@standarde.com E-mail  
www.standarde.com